

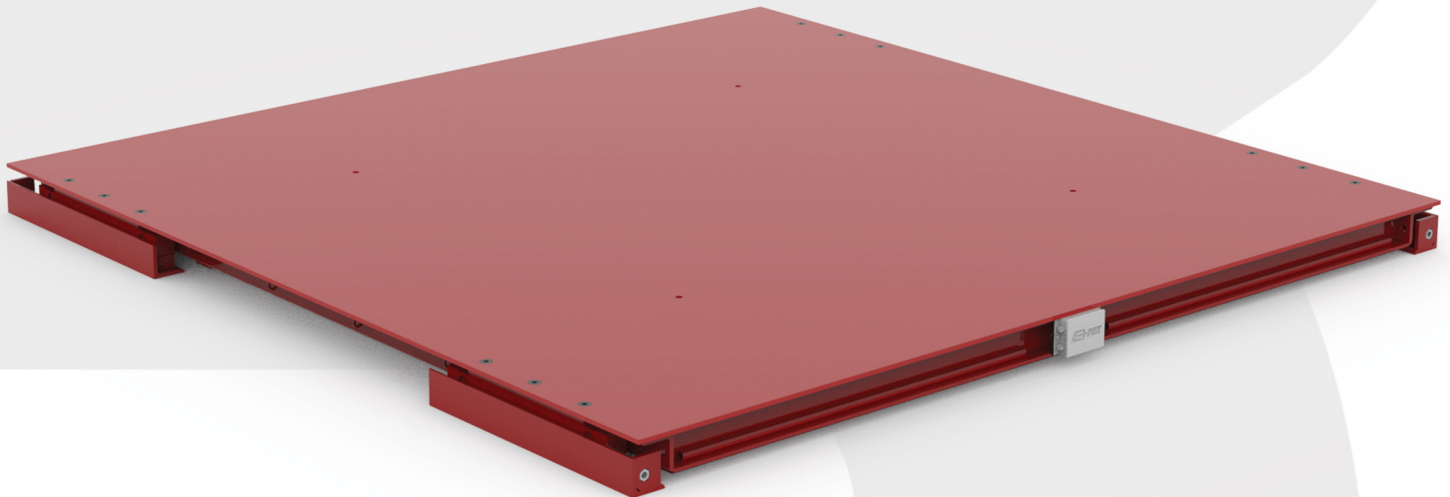
AX300

Portable Axle Scale

**Portable
Strong
Dependable**

Featuring a heavy-duty weighbridge design, the AX300 guarantees an accurate vehicle axle weight measurement every time. The weights are used to minimize the risk of overweight fines due to individual axles that exceed state maximum limits. Axle weights can also be accumulated to ensure trucks are not under loaded, maximizing the productivity of each load.

The AX300 Portable Axle Scale is offered in three standard platform lengths as well as custom sizes. The scale features four rigidly mounted load cells per platform with no moving suspension parts to wear or load feet to bend or break. The scale is constructed with I-beams and 1/2" tread plate decking, the thickest decking of any axle scale on the market.



No Concrete or Foundation Construction Required

Installs on top of concrete, asphalt, well-compacted gravel or flush with grade

1/2" Tread Plate Decking

The thickest deck plating in the industry for ultimate durability

Two-component Polyamide Epoxy Paint System

Durable surface to protect your investment

Superior Platform Construction

Built with I-beams for maximum strength

Stainless Steel Junction Box

Strong protection for wire terminations

Rigidly mounted Load Cells (4)

No moving suspension parts to wear, bend or break

AX300

Portable Axle Scale

Portable
Strong
Dependable

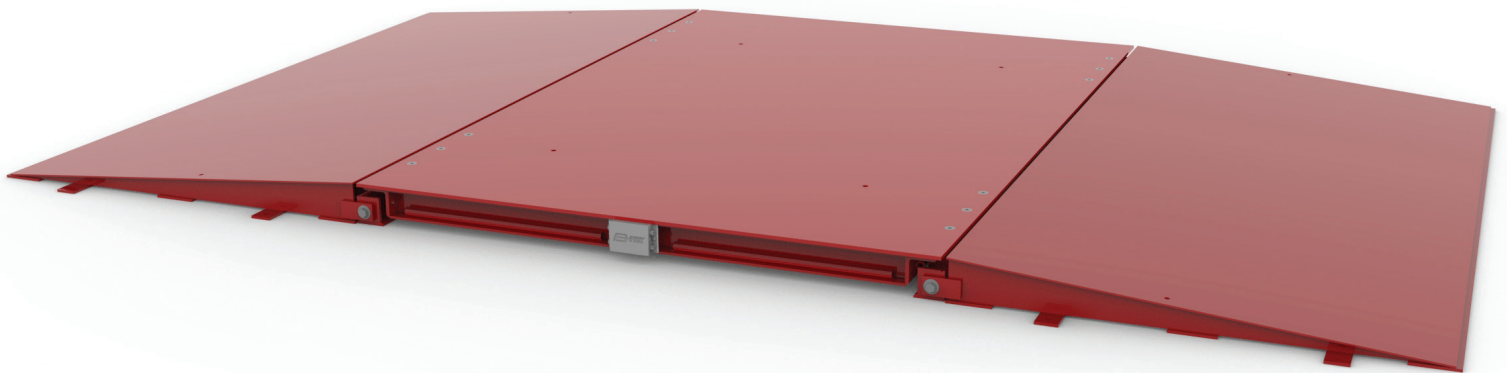
Specifications

- Certificate of Conformance: NON-NTEP
- Above ground portable axle scales
- Scale Capacity: 60,000 lb gross system capacity
- Scale Platform Length: 7' and 10'
- Scale Height: 6"
- Scale Width: 108" or 120"
- Scale Deck: 1/2" tread plate decking - welded to main beams
- Steel Preparation: Commercial blast cleaning SSPC-SP6
- Paint System: Two-component polyamide epoxy paint
- (4) 25,000 lb double-ended shear beam per platform
- Plated alloy steel, environmentally sealed (IP67)
- NEMA 4X stainless enclosure and gathering card
- 1-Year weighbridge warranty covering defect in materials and workmanship
- 1-Year load cell warranty covering defects in materials and workmanship

Options

- Detachable carbon steel ramps, 108" or 120" wide x 36" length
- Stainless steel load cell upgrade

Width	Length	Weight	Capacity
108"	84"	2,700 lb	60K
108"	120"	4,400 lb	60K
120"	120"	4,900 lb	60K



120" x 120" shown with optional ramps

